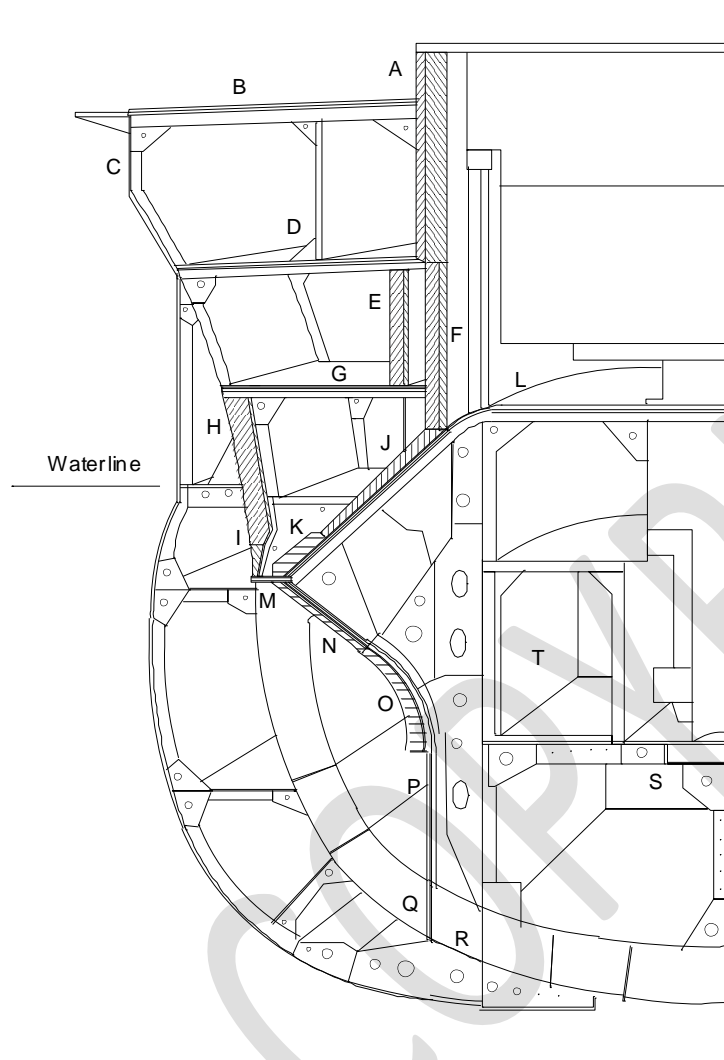


Nagato Hull Armor

by Robert Lundgren

Nagato Frame 53

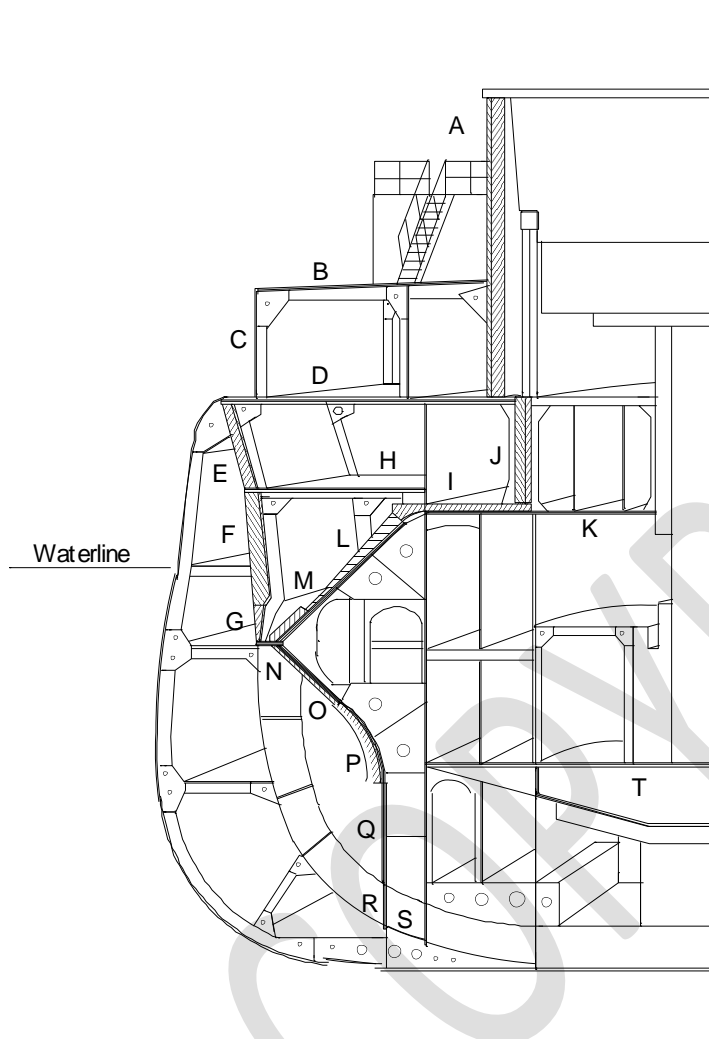


- A - Barbette - 122 mm NVNC on 299 mm VC
- B- Forecastle Deck - 2 x 13 mm HT plates
- C - Outer Shell - 19 mm HT plate
- D - Upper Deck - 2 x 13 mm HT plates
- E - Upper Belt - 224 mm VC on 25 mm HT plate
- F - Lower Barbette - 209 mm VC + 75 mm VNC
- G - Main Deck - 3 x 25 mm HT Plates
- H - Main Belt - 299 mm VC on 17.5 mm HT plate
- I - Lower belt - 149 mm tapering to 75 mm VC on 17.5 mm HT plate
- J - Upper slope - 274 mm VC tapering to 125 mm VC on 3 x 25 mm HT plates
- K - Bottom of slope - 242 mm NVNC on 3 x 25 mm HT plates
- L - Barbette Floor - 2 x 25 mm HT plates
- M - Armor shelf - 19 mm + 25 mm + 22 mm HT plates
- N - Top Torpedo Bulkhead 44 mm CNC on 4 x 25 mm HT plates
- O - Middle section Torpedo Bulk head - 107 mm increasing to 220 mm VH on 3 x 25 mm HT plates
- P - Lower section torpedo bulkhead 3 x 25 mm HT plates
- Q - Bottom section Torpedo Bulk head - 2 x 25 mm HT plates
- R - Keel - 25 mm HT + 13 mm HT plates
- S - Magazine - 37.5 MM CNC
- T - Interior Bulkhead of Barbette - 13 mm HT

Nagato Hull Armor

by Robert Lundgren

Nagato Frame 77

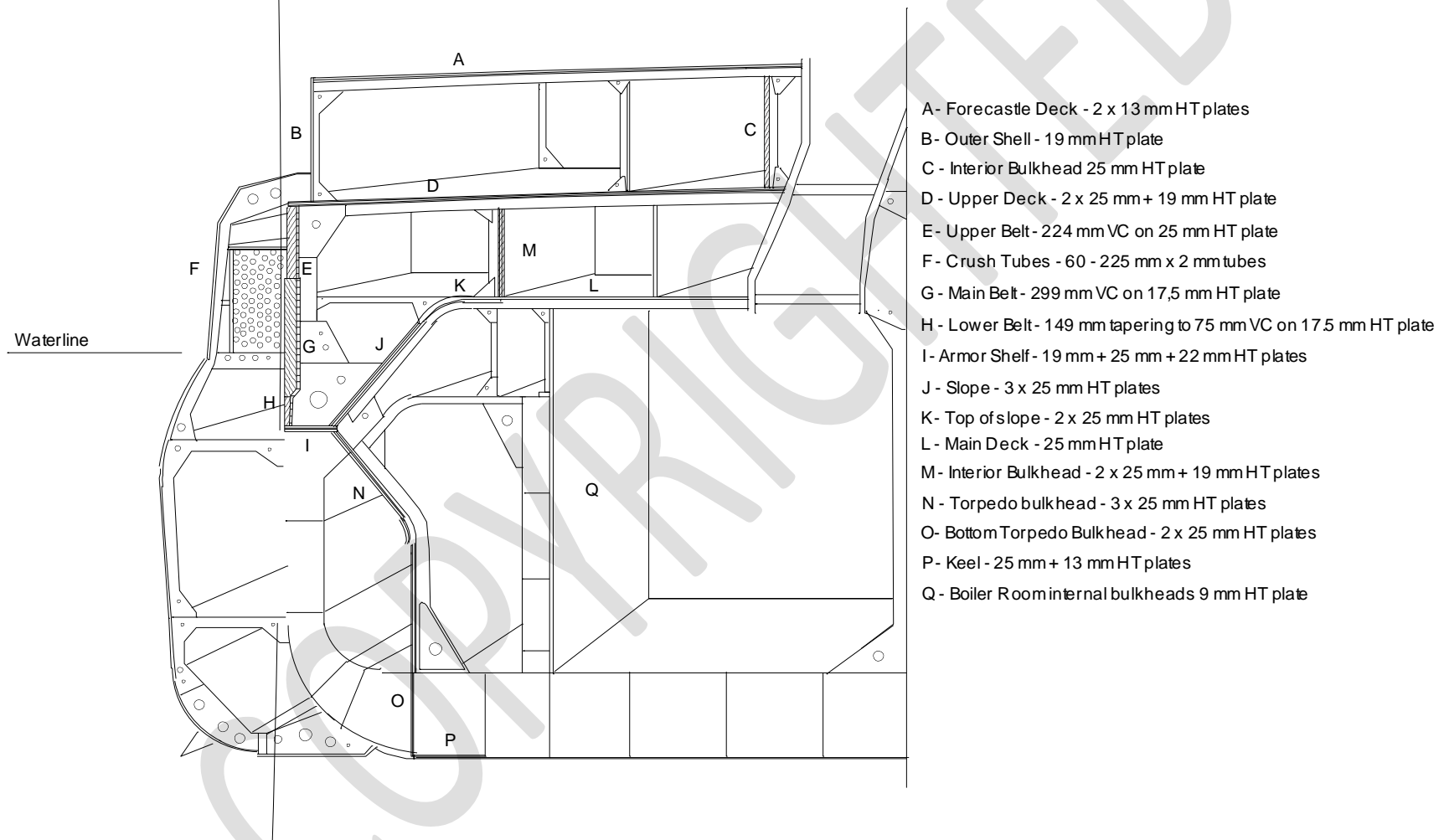


- A - Barrette - 122 mm NVNC on 299 mm VC
- B - Forecastle Deck - 2 x 13 mm HT plates
- C - Outer shell - 19 mm HT
- D - Upper Deck - 2 x 13 mm HT plates
- E - Upper Belt - 224 mm VC on 25 mm HT plate
- F - Main Belt - 299 mm VC on 17.5 mm HT plate
- G - Lower Belt - 149 mm tapers to 75 mm VC on 17.5 mm HT plate
- H - Main Deck - 3 x 25 mm HT plates
- I - Middle Deck - 125 mm NVNC on 2 x 25 mm HT plates
- J - Lower Barrette - 209 mm VC on 75 mm VNC plate
- K - Inboard Middle Deck - 2 x 25 mm HT plates
- L - Upper Slope - 274 mm VC tapering to 125 mm on 3 x 25 mm HT plates
- M - Lower Slope - 242 mm NVNC on 3 x 25 mm HT plates
- N - Armor Shelf - 19 mm + 25 mm + 22 mm HT plates
- O - Upper Torpedo Bulkhead - 44 mm CNC on 4 x 25 mm HT plates
- P - Middle Torpedo Bulkhead - 107 mm increasing to 220 mm VH on 3 x 25 mm HT plates
- Q - Lower Torpedo Bulkhead - 3 x 25 mm HT plates
- R - Bottom Torpedo Bulkhead - 2 x 25 mm HT plates
- S - Keel - 25 mm HT on 13 mm Ht plate
- T - Magazine Protection - 38 mm CNC Plate

Nagato Hull Armor

by Robert Lundgren

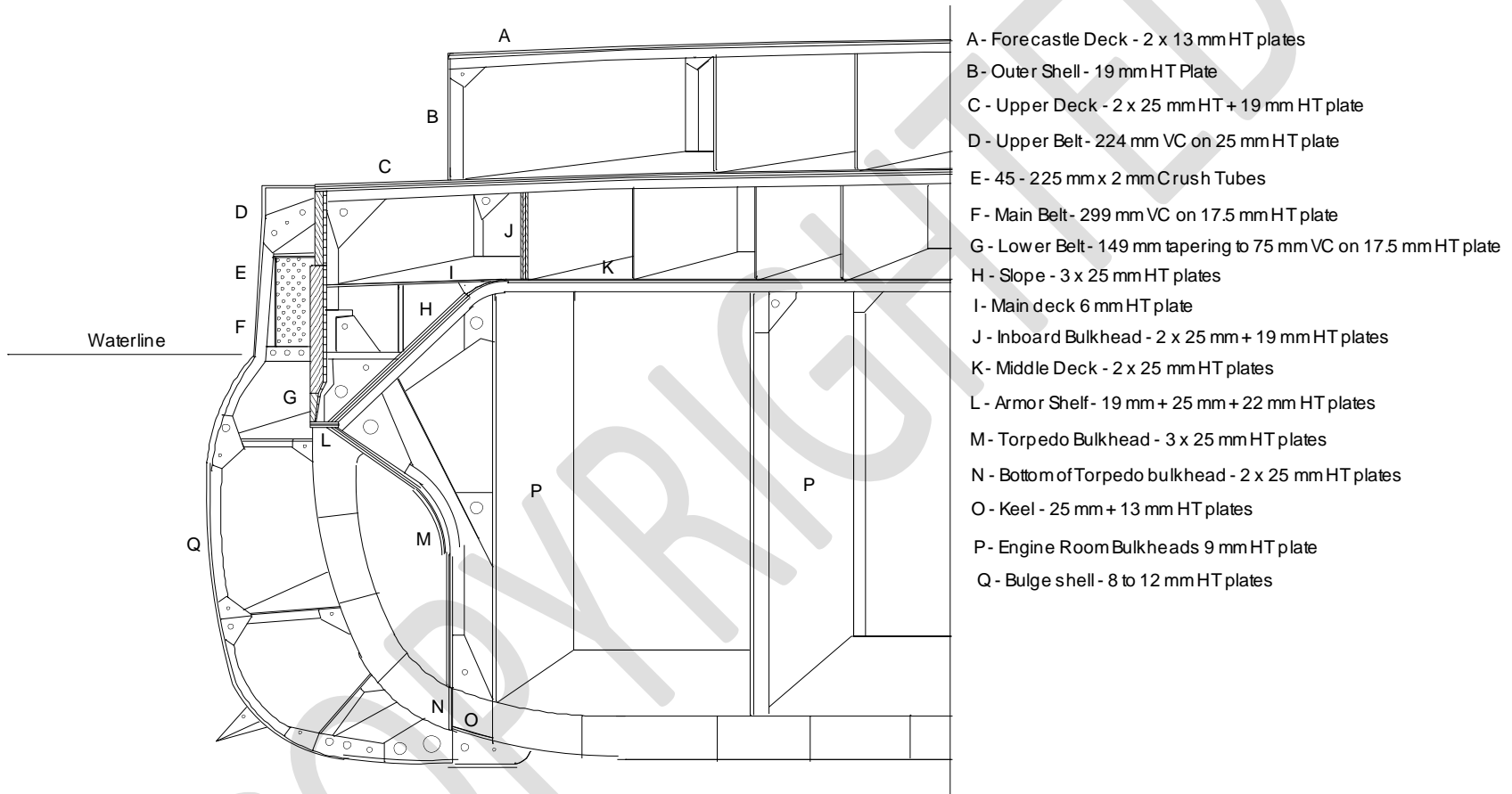
Nagato Frame 143



Nagato Hull Armor

by Robert Lundgren

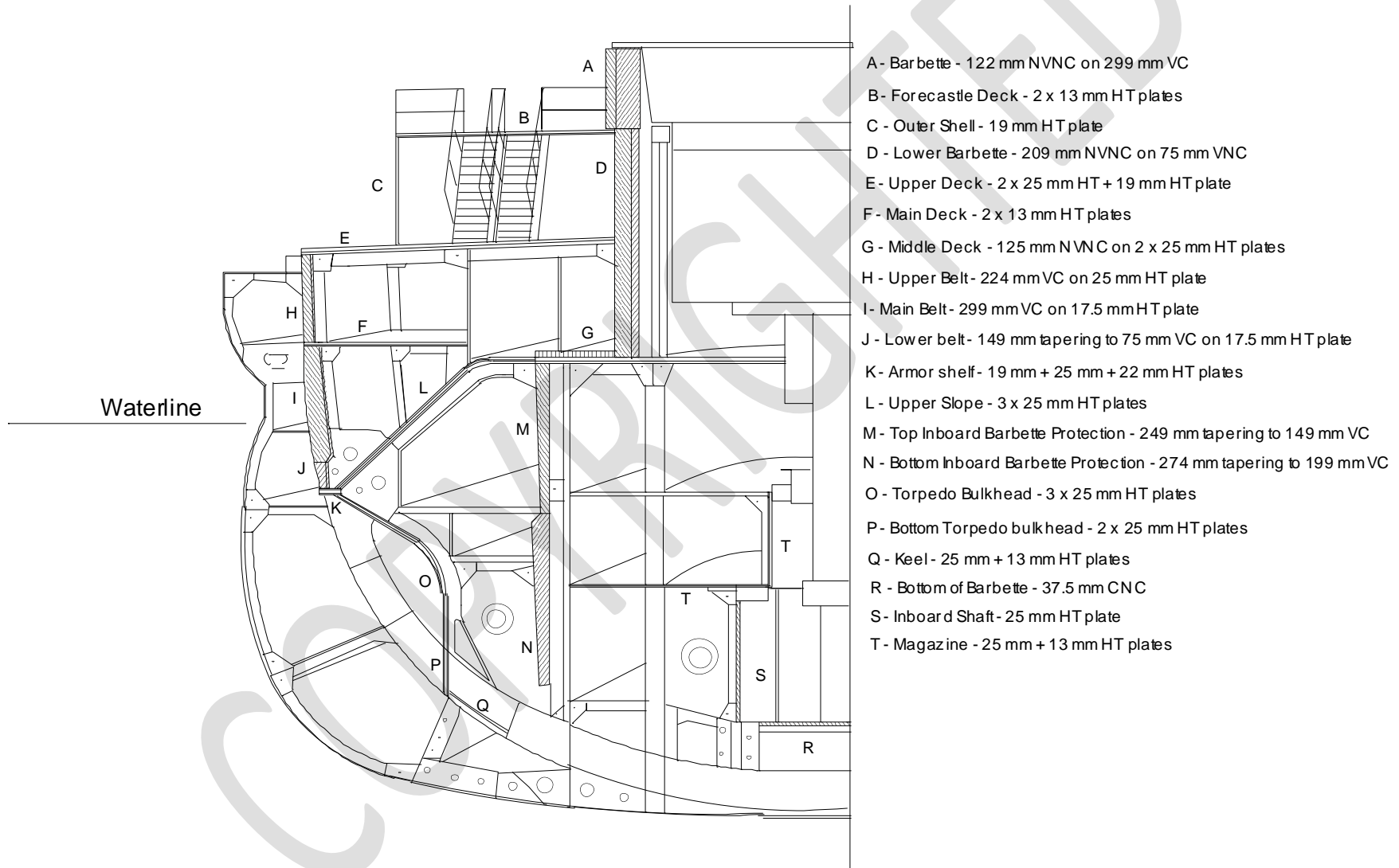
Nagato Frame 201



Nagato Hull Armor

by Robert Lundgren

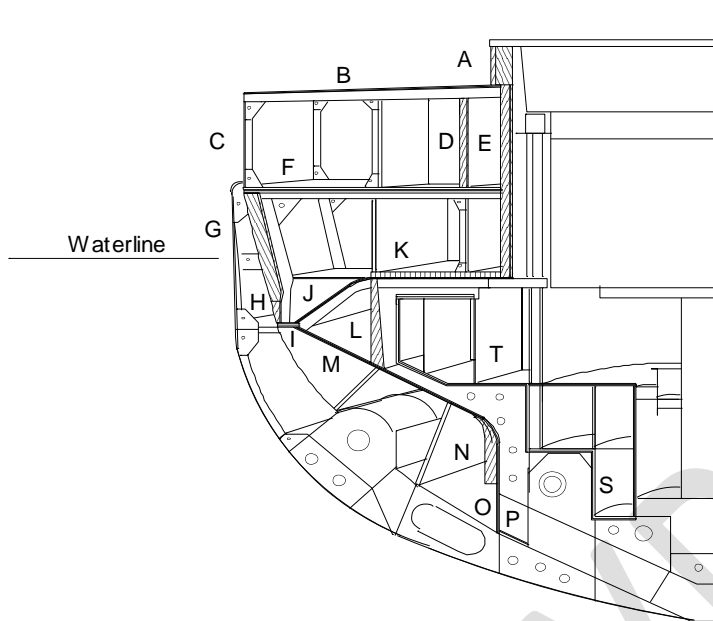
Nagato Frame 239



Nagato Hull Armor

by Robert Lundgren

Nagato Frame 261



- A- -Barbette - 122 mm NVNC on 299 mm VC
- B - Upper Deck - 2 x 13 mm HT plates
- C - Outer Shell - 19 mm HT plate
- D - Upper Belt - 224 mm VC on 25 mm HT plate
- E - Lower Barbette - 209 mm VC on 75 mm VNC
- F - Main Deck - 2 x 25 mm HT on 19 mm HT plate
- G - Main Belt - 299 mm VC on 17.5 mm HT plate
- H - Lower Belt - 149 mm tapering to 75 mm VC on 17.5 mm HT plate
- I - Armor Shelf - 19 mm +25 mm + 22 mm HT Plates
- J - Slope - 3 x 25 mm HT plates
- K - Middle Deck - 125 mm NVNC on 2 x 25 mm HT plates
- L - Inboard Lower Belt - 125 mm increasing to 249 mm VC
- M - Upper Torpedo Bulkhead - 3 x 25 mm HT plates
- N - Middle Torpedo Bulkhead - 25 mm VH increasing to 199 mm VH on 3 x 25 mm HT plates
- O - Bottom Torpedo Bulkhead - 2 x 25 mm HT plates
- P - Keel 25 mm + 13 mm HT plates
- S - Magazine - 37.5 mm CNC
- T- Shell Rooms - 25 mm + 13 mm HT plates